

SP20

**Smart Wi-Fi Plug
User Manual**

▶ Content

Warm Tips	1
Key Specification	2
Structure Introduction	3
How to connect Smart Plug to Wi-Fi network	4-10
Quick Mode Configuration (Common)	
AP Mode Configuration	
How to connect Smart Plug to Amazon Alexa	11-14
How to connect Smart Plug to Google Home	15-17
Warranty	18

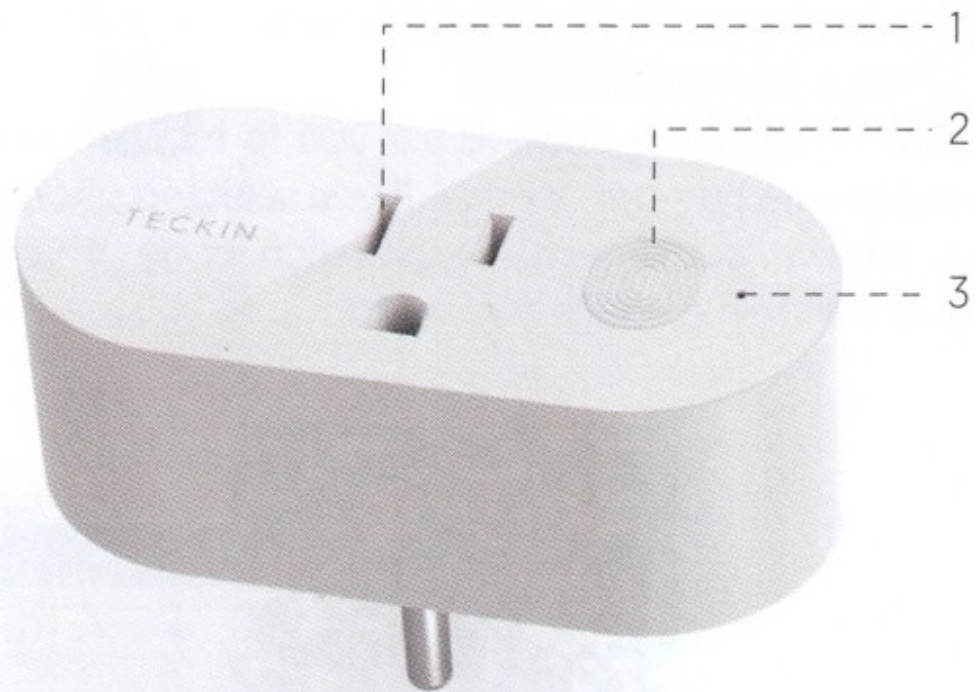
▶ Warm Tips

- Only supports 2.4 GHz Wi-Fi network
- Simplified steps to install App on your smart phone or tablet on Apple/Google Play Store
- Works with Amazon Alexa, Google Home & IFTTT.

▶ Key Specification

Model	SP20
Color	White
Working Temp	-10 ~60 °C
WIFI Requirement	2.4GHz Only
Input Voltage	AC110-240V
Output	16A maximum load
App support	IOS/Android
Product Size	84*50*30(mm)
Product Weight	150g

► Structure Introduction

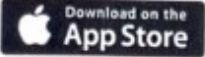
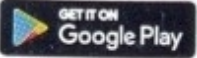


1. Socket

2. On/Off switch

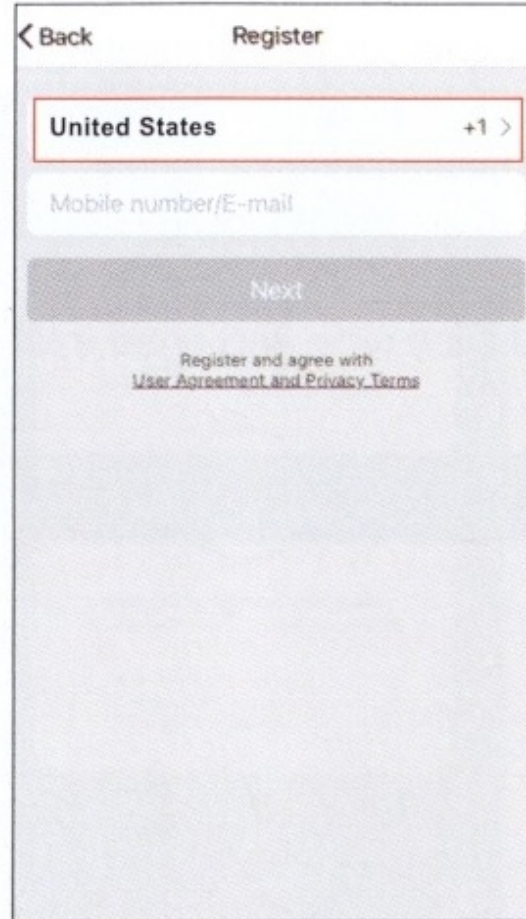
3. Indicator

▶ How to connect Smart Plug to Wi-Fi network

1. Download **Smart Life** from  or .
2. Download or scan the QR code and install the Smart Life App for either iOS and Android.
Once downloaded, the app will ask you to register your device. Enter your phone number or email. If you selected phone number, you will receive a text with a registration code. If you choose email, you will then create a password.



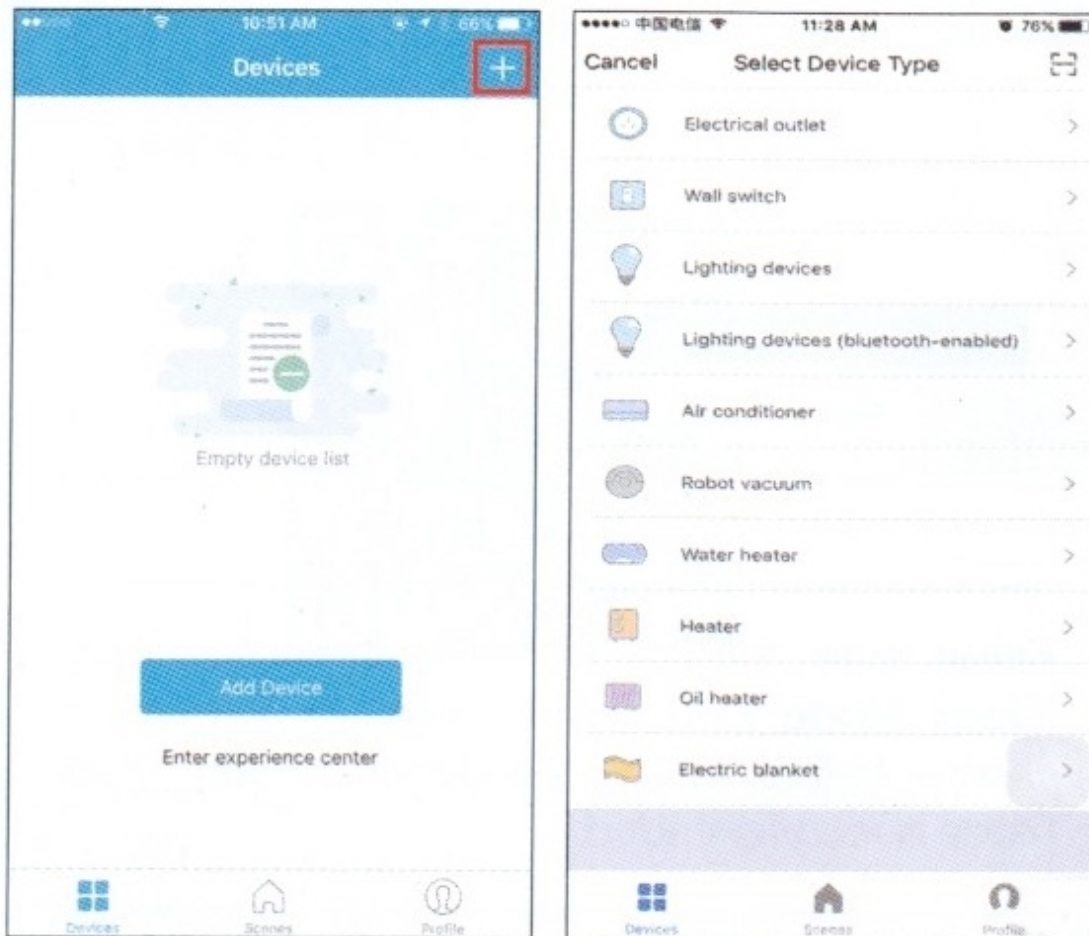
Attention: There's no Registration Code needed if email method chosen.



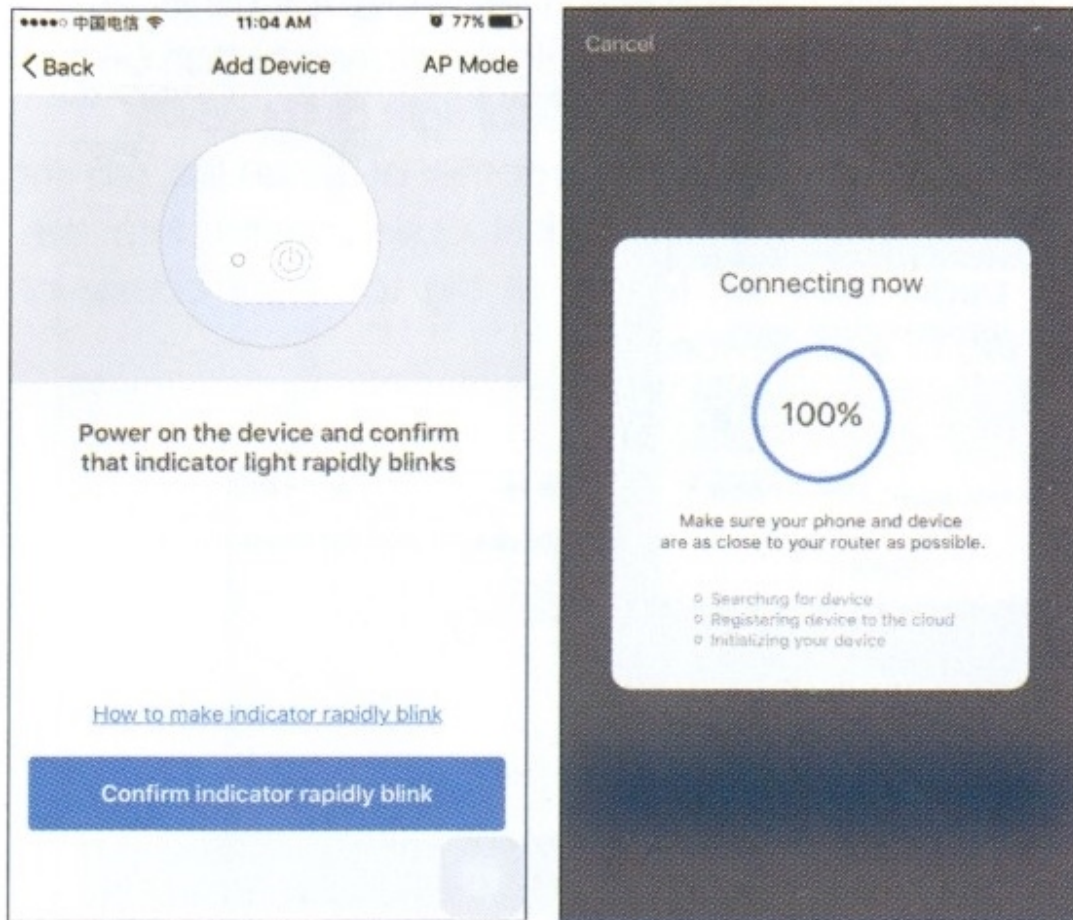
Please note: there're two modes configurations [Quick Mode / AP Mode] available for you to choose before adding the device to app. Quick Mode is recommended.

Quick Mode Configuration (Common)

1. Make sure quick mode configuration is initiated: the indicator light blinks blue rapidly [twice per second]. If it blinks blue slowly [once every 3 seconds], press and hold the power button on the Mini Smart Plug for 6 seconds until the indicator light blinks rapidly.
2. Tap the icon “+” on the top right corner of “Smart Life”, choose your device type and enter into “Add Device”



3. Follow the in-app instructions to connect the Smart Plug to your Wi-Fi network.



4. Once connected, the App will prompt the connection, and click "Done"

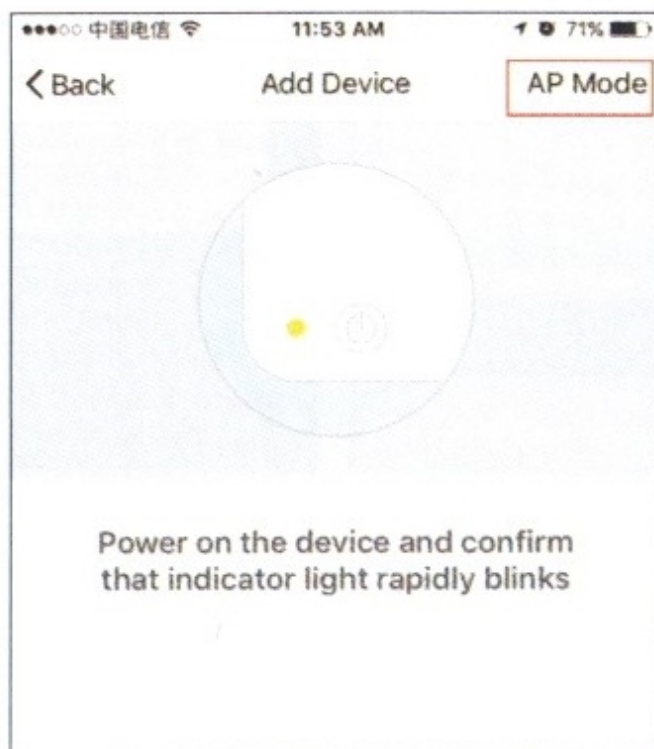
5. Now you can control the Smart Plug through **Smart Life** APP.

6. Once the configuration is completed successfully, the indicator light will turn to solid red and the device will be added to the "Device List".

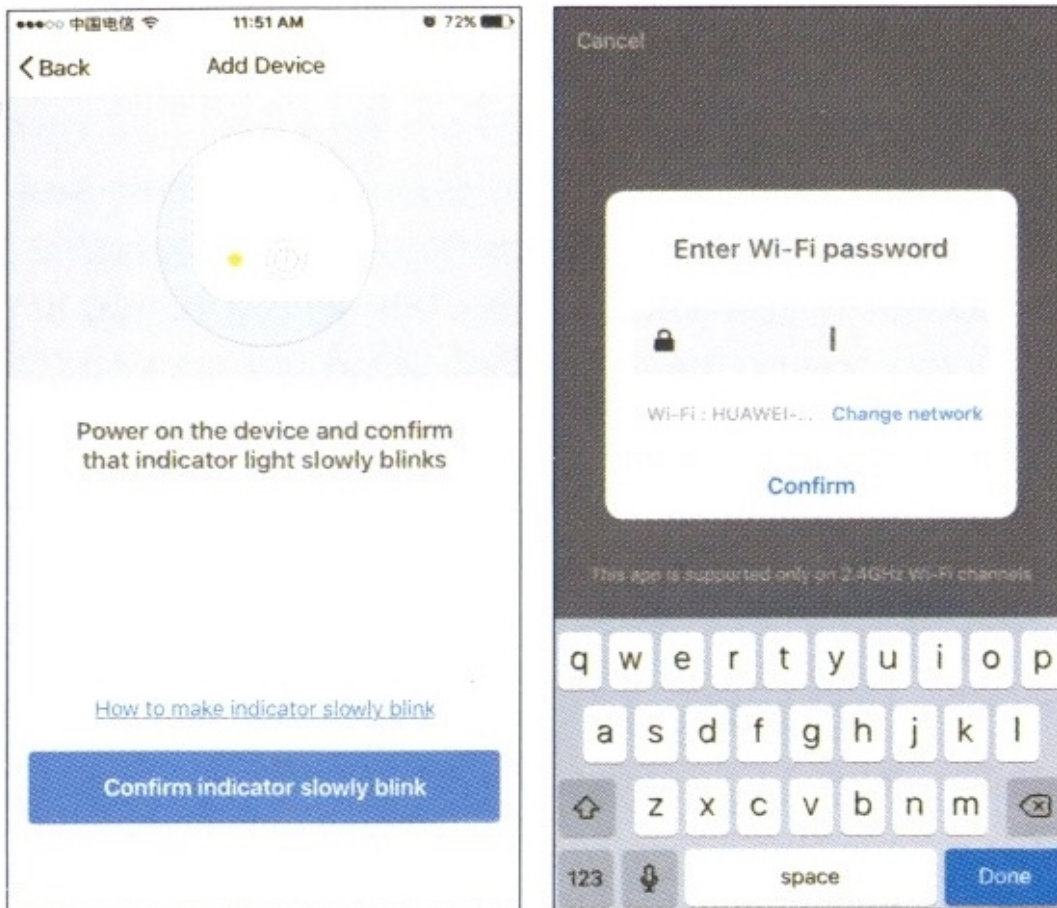
AP Mode Configuration

1. Make sure AP mode configuration is initiated: the indicator light blinks blue slowly [once every 3 seconds]. If it blinks blue rapidly [twice per second], press and hold the power button on the Smart Plug for 6 seconds until the indicator light blinks slowly.

2. Tap the icon “+” at the top right corner of “Smart life” tab and then select the device type [Electrical outlet], enter into the “Add Device” page, click “AP Mode” at the top right corner of “Add Device” tab to add device.



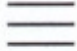
3. Follow the in-app instructions to connect the Smart Plug to your Wi-Fi network.

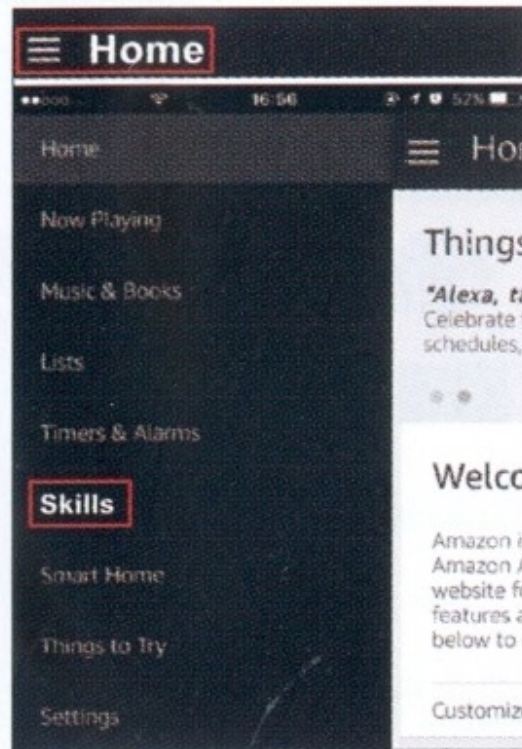
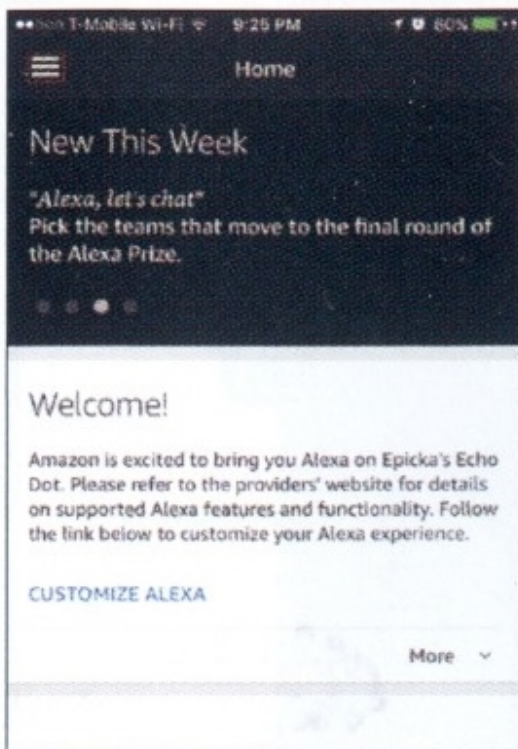


4. Once connected, the App will prompt the connection, and click "Done".
5. Now you can control the Smart Plug through **Smart Life** APP.
6. Once the configuration is completed successfully, the indicator light will turn to solid red and the device will be added to the "Device List".

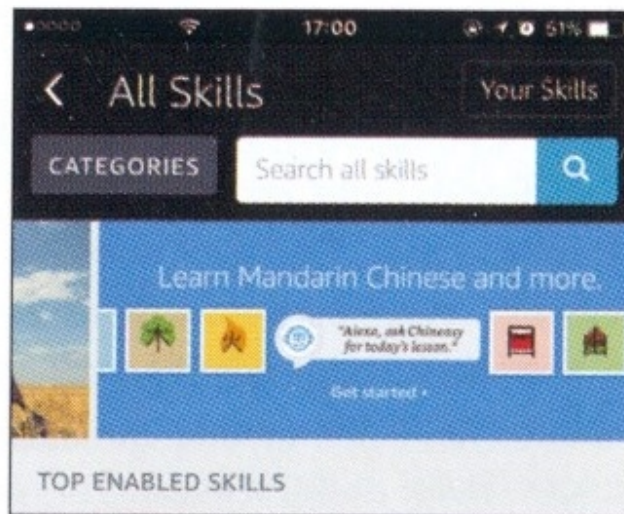
Please note: you can add the Smart Plug to Echo/ Google Home following this instructions below. Or the one on the app [Open Smart Life App, go to "Profile" -> "Integration" , tap "Amazon echo "or "Google Home" and install].

► How to connect Smart Plug to Amazon Alexa

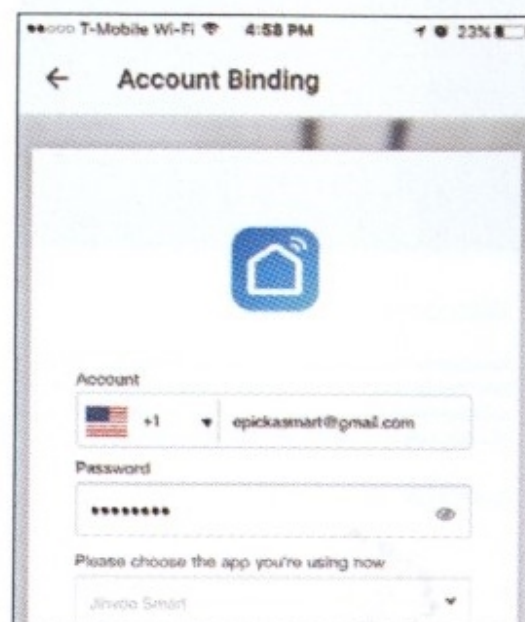
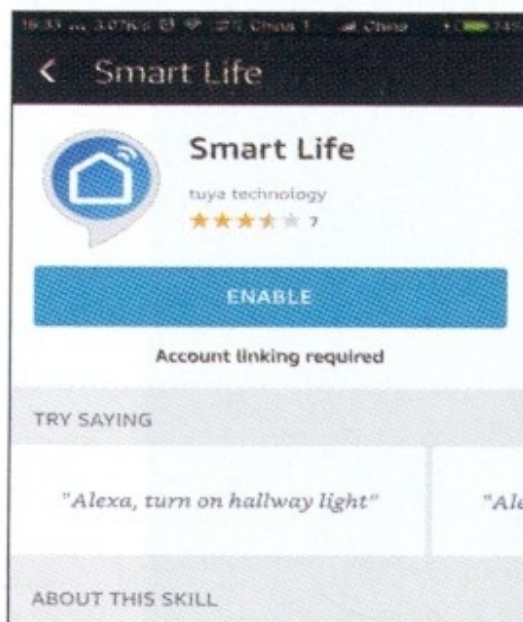
1. Launch **Smart Life** App, sign in your account and make sure Smart Plug is in device list.
2. Modify device name so that Alexa can easily recognize, such as: Living Room Light, Bedroom Light, etc.
3. Minimize **Smart Life** App, then Launch the Alexa App and sign in your Alexa account and make sure you have at least one Alexa voice-controlled device installed like Echo, Echo dot, etc.
4. In the upper left corner of Home page, click  button to show App menu. Then clicks "Skills" in the menu.



5. Type in **Smart Life** in the search and click the search button next to it.

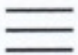


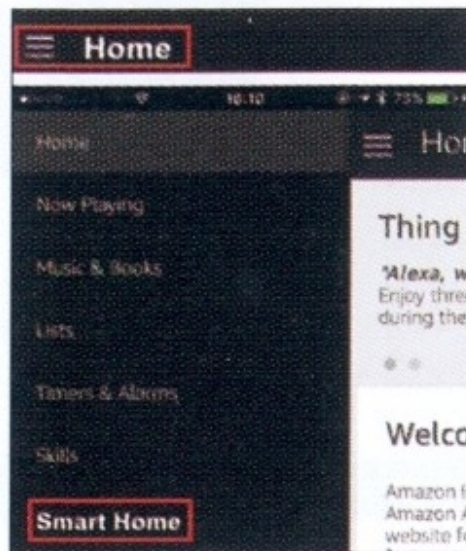
6. Enable Smart Life to the skill, then sign in your Smart Life account to complete the account linking.



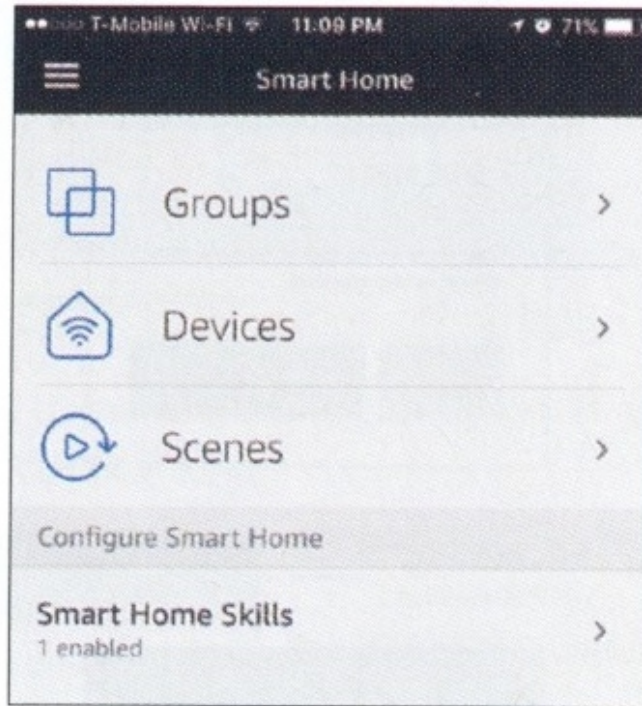
7. After linked account successfully, you can ask Alexa to discover devices. Alexa will show all the discovered devices after 20 seconds.



8. Back to Menu by clicking  button, and then click "Smart Home" button.

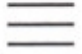


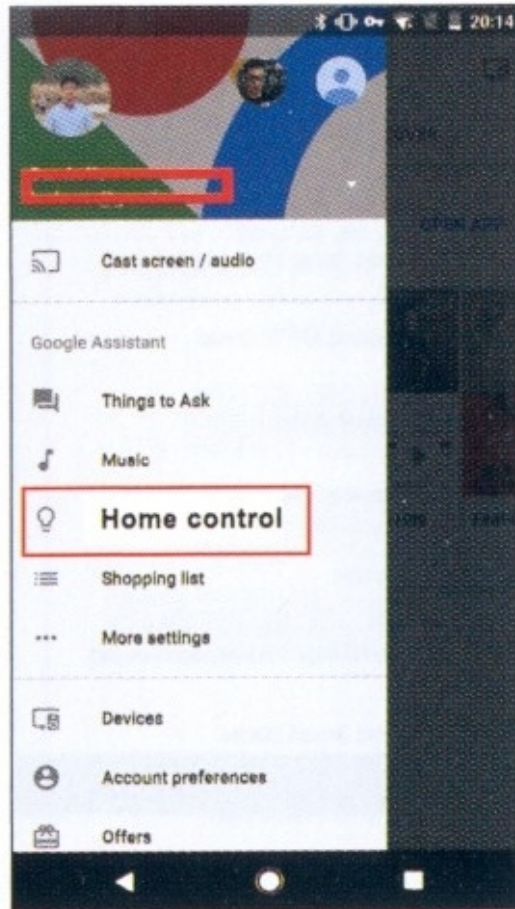
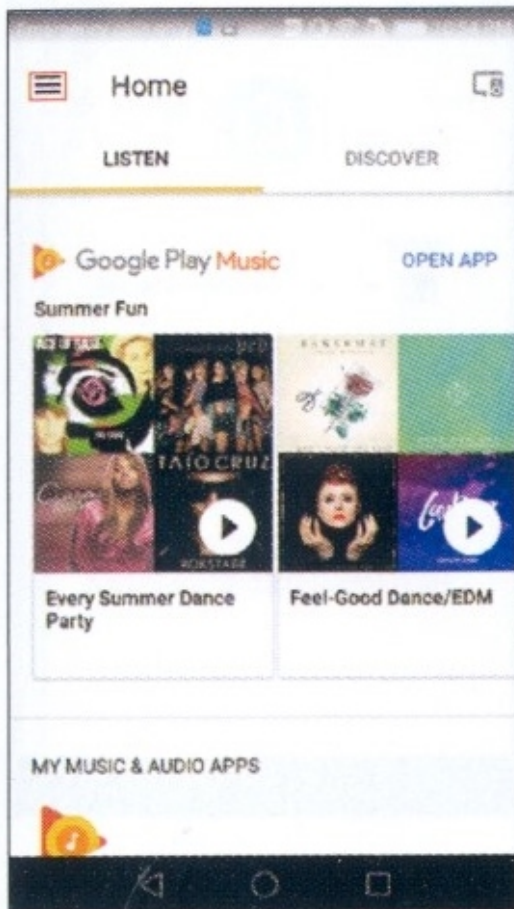
9. In Smart Home page, you can group your devices for different categories. Your **Smart Life** APP has been skilled with Alexa. Now you can control your Smart Plug through Alexa.



▶ How to connect Smart Device to Google Home

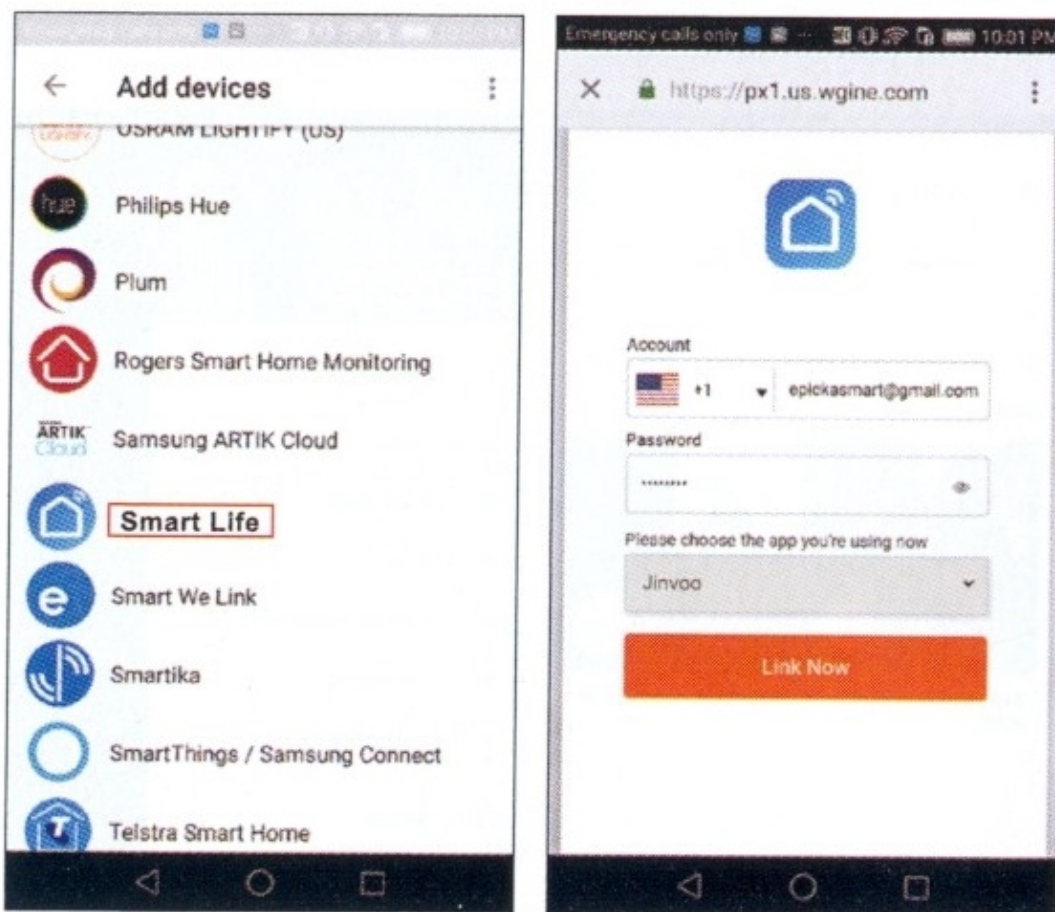
1. Launch the Google Home App and make sure Google Home speaker is installed. If not, please follow Google Home speaker installation instruction to complete the installation.

2. Once Google Home is installed, in the upper left corner of App Home page, click  button to show App menu. Then click "Home Control" in the menu.



3. On "Add device" page, scroll down to find "Smart Life" and then click it. Sign in Smart Life APP with your account and password.

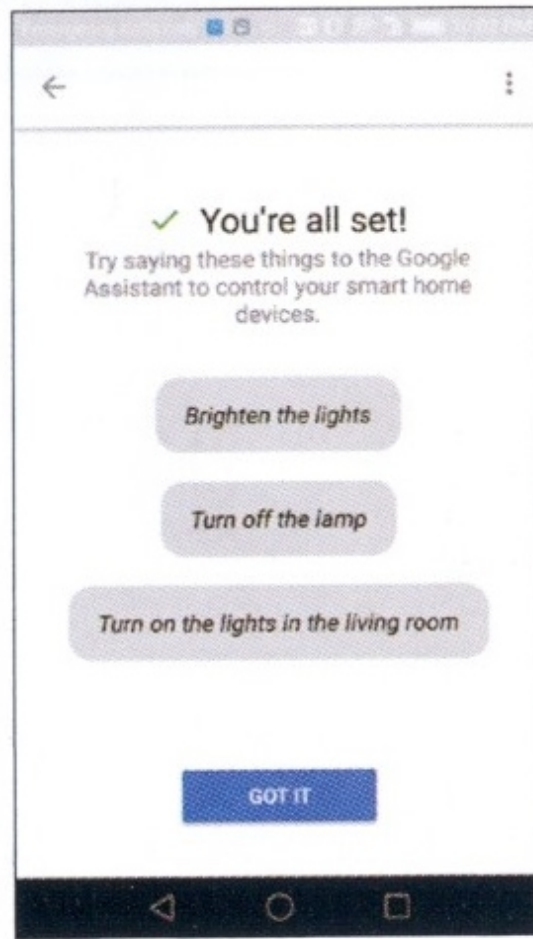
Choose Smart Life APP in the dropdown menu to complete the account linking.



4. After successful account linking, in Google Home App you can see all the smart devices from your **Smart Life** App account. You can assign rooms for each device.

5. Now you can use Google Home to control your smart devices, you can say like:

OK Google, turn on/off wall light
OK Google, set bedroom light to red.



► Warranty

The product carries a one-year warranty from purchase date. Please feel free to let us know what we can do to assist you when you have any product problem.

Teckin customer service email:

support.us@teckin.co



Made in China

Version 1.0