



**SAMSUNG**

# AllShare Cast Dongle



[www.samsung.com](http://www.samsung.com)

GH68-37002F  
Type STA. 04/2013. Rev. 1.3

## **Safety Precautions**

### **Keep your device dry**

Humidity and all types of liquids may damage device parts of electronic circuits.

### **Do not use or store your device in dusty, dirty areas**

Dust can cause your device to malfunction.

### **Avoid exposing your device to very cold or very hot temperatures (below 5 °C or above 35 °C)**

Extreme temperatures can cause the deformation of the device and reduce the charging capacity and life of your device.

### **Do not drop your device or cause impacts to your device**

If bent or deformed, your device may be damaged or parts may malfunction.

### **Do not disassemble, modify, or repair your device**

Any changes or modifications to your device can void your manufacturer's warranty. For service, take your device to a Samsung Service Center.

**When cleaning your device:**

Wipe your device with a towel or an eraser. Do not use chemicals or detergents.

**Do not use the device for anything other than its intended use****Avoid using your device's light close to the eyes of children or animals****Use only Samsung-approved adapters**

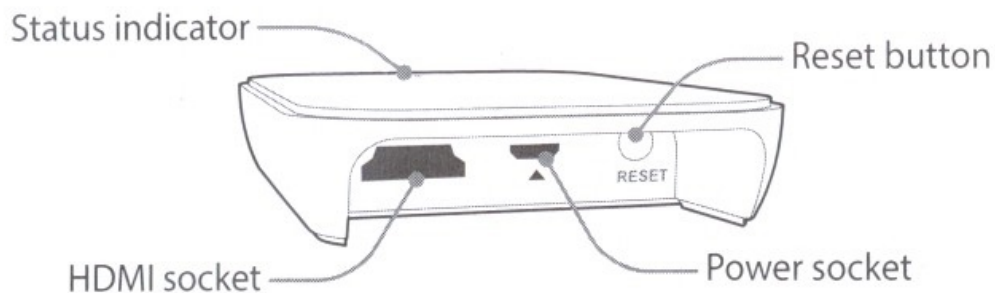
Unauthorized or Non-Samsung chargers could cause damage to your device or in extreme circumstances an explosion, it could also invalidate any warranty on the product.


3

*Graphics used in this manual are for illustration purposes. The actual products may vary.*

**Overview**

---



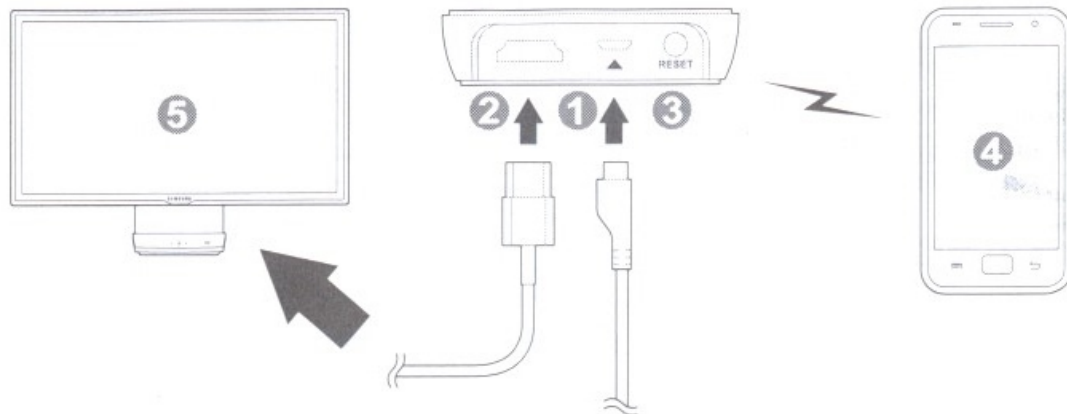
-  Make sure you have the following items: AllShare Cast Dongle, travel adapter, HDMI A-to-A cable, and user manual. The supplied items may vary.

4

## Using the AllShare Cast Dongle

You can view your mobile device's screen on a monitor.

-  Use the mobile device supporting the **AllShare Cast** or **Screen Mirroring** feature, and the monitor supporting HDMI(High Definition Multimedia Interface) feature and HDCP(High-bandwidth Digital Content Protection) feature. Some devices may not be compatible.



5

- 1 Connect the AllShare Cast Dongle to a mains outlet using the travel adapter. The indicator turns red after 3 to 4 seconds.
- 2 Connect the AllShare Cast Dongle to a monitor using the HDMI A-to-A cable. The red indicator begins blinking after approximately 30 seconds.
  - For information about connecting the HDMI cable, refer to the monitor's user manual.
  - The mobile device cannot connect to the AllShare Cast Dongle, unless the AllShare Cast Dongle is connected to a monitor.
- 3-1 To connect to a new mobile device, use one of the following methods. The PIN code method is not supported on some mobile devices.
  - **Reset button method (complete steps within 2 minutes)**  
Press the Reset button. The indicator turns blue. On the mobile device, launch **AllShare Cast** or **Screen Mirroring**. The monitor displays the AllShare Cast Dongle's name. Select the same name from the list that is displayed on your mobile device.

PIN CODE WAS NEEDED FIRST TIME.

6

- **PIN code method (complete steps within 30 seconds)**

On the mobile device, launch **AllShare Cast** or **Screen Mirroring**. The monitor displays the AllShare Cast Dongle's name. Tap and hold the same name from the list that is displayed on your mobile device. Check the PIN code displayed on the monitor, and enter the PIN code on your mobile device.

3-2 To connect to a previously used device (complete steps within 2 minutes):

On the mobile device, launch **AllShare Cast** or **Screen Mirroring**. The monitor displays the AllShare Cast Dongle's name. Select the same name from the list that is displayed on your mobile device.

4 When the connection is complete, the monitor displays the mobile device's home screen.

- The screen aspect ratio on your device should be identical with that of the monitor. Otherwise, part of displayed screen may be cut off. For better picture quality, set the screen aspect ratio on your monitor to fit its original screen or select the auto aspect ratio setting manually. If auto aspect ratio setting is not available on your device, some parts of screen can be cut off.

7

5 To connect to a new device, press and hold the Reset button until the indicator turns red, and then release. Repeat this setup procedure from step 3.



- Make sure the AllShare Cast Dongle is connected to a mains outlet.
- AllShare Cast Dongle supports monitors up to 1080p. The supported resolution may differ depending on the connected mobile device.
- When an error occurs while in use, disconnect the travel adapter and connect again.
- **AllShare Cast** or **Screen Mirroring** automatically terminates when a headset or a Bluetooth headset is connected to the mobile device during video playback. However, it stays connected when playing games or using the Internet.

8

**FCC Radiation Exposure Statement:**

This equipment complies with FCC radiation exposure limits set forth for an uncontrolled environment. This equipment should be installed and operated with a minimum distance of 20 cm between the radiator and your body.

**Federal Communications Commission (FCC) Interference Statement:**

This device complies with Part 15 rules. Operation is subject to the following two conditions:

1. This device may not cause harmful interference, and
2. This device must accept any interference received, including interference that may cause undesired operation.

This equipment has been tested and found to comply with the limits of a Class B digital device, pursuant to Part 15 of the FCC Rules. These limits are designed to provide reasonable protection against harmful interference when the equipment is operated in a residential environment. This equipment generates, uses, and radiates radio frequency energy, and if not installed and used in accordance with the instructions, may cause harmful interference. However, there is no guarantee that interference will not occur. If this equipment does cause interference to radio or television reception, which can be determined by turning the equipment off and on, the user is encouraged to correct the interference by one of the following measures:

- Reorient or relocate the receiving antenna.
- Increase separation between the equipment and receiver.
- Connect the equipment to an outlet on a circuit different from which the receiver is connected.
- Consult the dealer or an experienced radio/TV technician.

9

The Part 15 radio device operates on a non-interference basis with other devices operating at this frequency when using the integrated antennas. Any changes or modification to the product not expressly approved by Samsung could void the user's authority to operate this device.

**Recycling Direct**

To dispose electronics properly, follow the recycling process regulated in your area or go to Samsung website to find the nearest recycling location:

[www.samsung.com/recyclingdirect](http://www.samsung.com/recyclingdirect)

Or call, (877) 278 - 0799.

**Samsung Telecommunications America, LLC**

1301 E. Lookout Drive  
Richardson, Texas 75082  
Phone: 1-800-SAMSUNG  
Phone: 1-888-987-HELP (4357)

10